

Product datasheet

Anti-Integrin alpha E antibody [EPR4166(2)] ab129202

Recombinant RabMAb

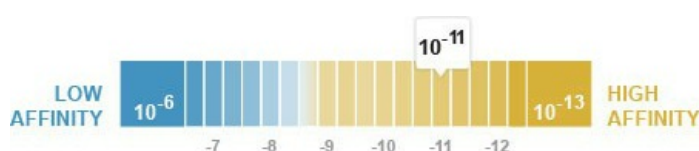
★★★★★ 4 Abreviews 8 References 8 Images

Overview

Product name	Anti-Integrin alpha E antibody [EPR4166(2)]
Description	Rabbit monoclonal [EPR4166(2)] to Integrin alpha E
Host species	Rabbit
Tested applications	Suitable for: IHC-P
Species reactivity	Reacts with: Human
Immunogen	Synthetic peptide within Human Integrin alpha E aa 1-100 (extracellular). The exact sequence is proprietary.
Positive control	IHC-P: Human colon, tonsil and ileum tissues.
General notes	<p>A trial size is available to purchase for this antibody.</p> <p>Clone EPR4166(2) is different from clone EPR4166.</p> <p>Our RabMAb[®] technology is a patented hybridoma-based technology for making rabbit monoclonal antibodies. For details on our patents, please refer to RabMAb[®] patents</p> <p>We are constantly working hard to ensure we provide our customers with best in class antibodies. As a result of this work we are pleased to now offer this antibody in purified format. We are in the process of updating our datasheets. The purified format is designated 'PUR' on our product labels. If you have any questions regarding this update, please contact our Scientific Support team.</p> <p>This product is a recombinant rabbit monoclonal antibody.</p>

Properties

Form	Liquid
Storage instructions	Shipped at 4°C. Store at +4°C short term (1-2 weeks). Upon delivery aliquot. Store at -20°C. Stable for 12 months at -20°C.
Dissociation constant (K _D)	K _D = 1.62 x 10 ⁻¹¹ M



[Learn more about K_D](#)

Storage buffer	pH: 7.20 Preservative: 0.01% Sodium azide Constituents: PBS, 40% Glycerol, 0.05% BSA
Purity	Protein A purified
Clonality	Monoclonal
Clone number	EPR4166(2)
Isotype	IgG

Applications

Our [Abpromise guarantee](#) covers the use of **ab129202** in the following tested applications.

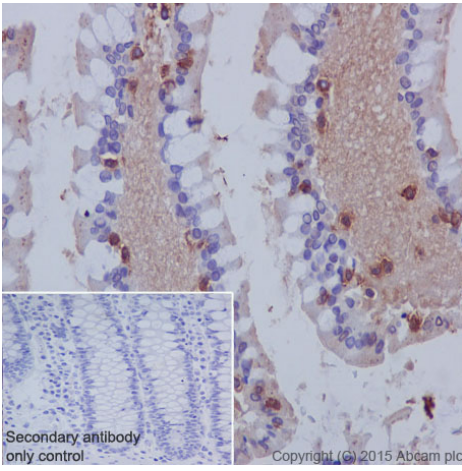
The application notes include recommended starting dilutions; optimal dilutions/concentrations should be determined by the end user.

Application	Abreviews	Notes
IHC-P	★★★★★	1/500 - 1/1000. Perform heat mediated antigen retrieval before commencing with IHC staining protocol. See IHC antigen retrieval protocols .

Target

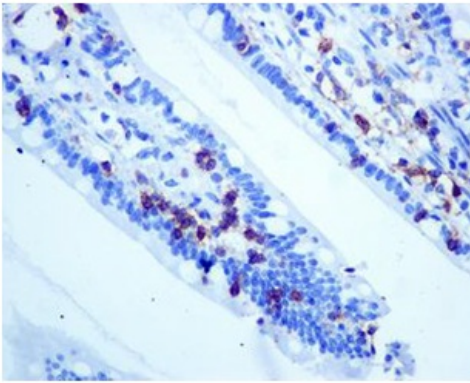
Function	Integrin alpha-E/beta-7 is a receptor for E-cadherin. It mediates adhesion of intra-epithelial T-lymphocytes to epithelial cell monolayers.
Tissue specificity	Expressed on a subclass of T-lymphocytes known as intra-epithelial lymphocytes which are located between mucosal epithelial cells.
Sequence similarities	Belongs to the integrin alpha chain family. Contains 7 FG-GAP repeats. Contains 1 VWFA domain.
Domain	The integrin I-domain (insert) is a VWFA domain. Integrins with I-domains do not undergo protease cleavage.
Cellular localization	Membrane.

Images



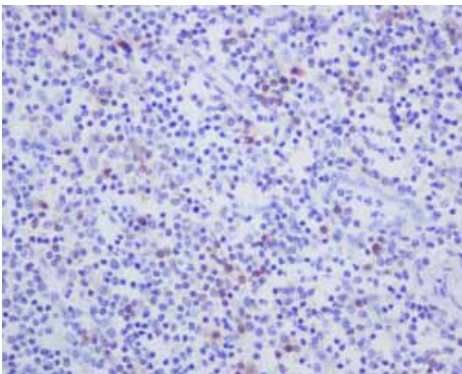
Immunohistochemistry (Formalin/PFA-fixed paraffin-embedded sections) - Anti-Integrin alpha E antibody [EPR4166(2)] (ab129202)

Immunohistochemistry (Formalin/PFA-fixed paraffin-embedded sections) analysis of human colon tissue labelling Integrin alpha E with purified ab129202 at 1/500. Heat mediated antigen retrieval was performed using Tris/EDTA buffer pH 9. [ab97051](#), a HRP-conjugated goat anti-rabbit IgG (H+L) was used as the secondary antibody (1/500). Negative control using PBS instead of primary antibody. Counterstained with hematoxylin.



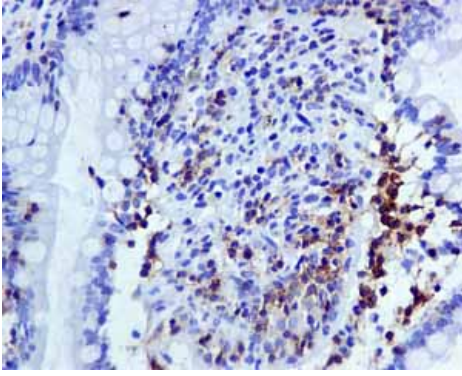
Immunohistochemistry (Formalin/PFA-fixed paraffin-embedded sections) - Anti-Integrin alpha E antibody [EPR4166(2)] (ab129202)

Immunohistochemistry (Formalin/PFA-fixed paraffin-embedded sections) analysis of human colon tissue labelling Integrin alpha E with unpurified ab129202 at a dilution of 1/500.



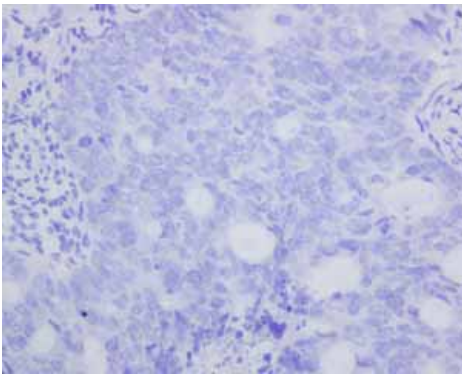
Immunohistochemistry (Formalin/PFA-fixed paraffin-embedded sections) - Anti-Integrin alpha E antibody [EPR4166(2)] (ab129202)

Immunohistochemistry (Formalin/PFA-fixed paraffin-embedded sections) analysis of normal human tonsil tissue labelling Integrin alpha E with unpurified ab129202.



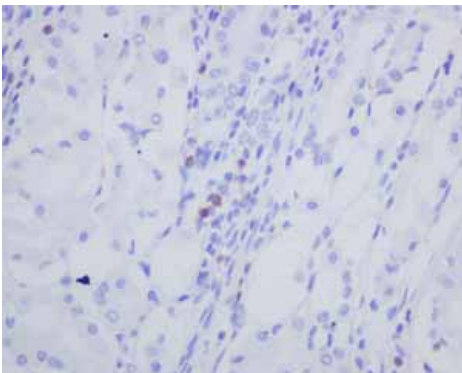
Immunohistochemistry (Formalin/PFA-fixed paraffin-embedded sections) analysis of normal human ileum tissue labelling Integrin alpha E with unpurified ab129202.

Immunohistochemistry (Formalin/PFA-fixed paraffin-embedded sections) - Anti-Integrin alpha E antibody [EPR4166(2)] (ab129202)



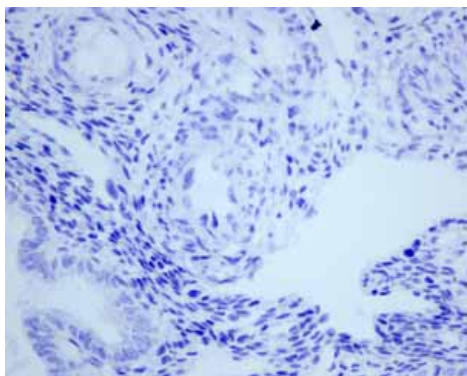
Unpurified ab129202 showing negative staining in colonic adenocarcinoma tissue.

Immunohistochemistry (Formalin/PFA-fixed paraffin-embedded sections) - Anti-Integrin alpha E antibody [EPR4166(2)] (ab129202)



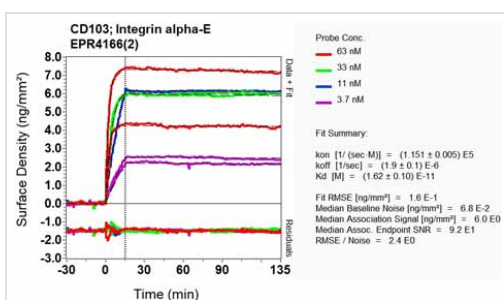
Unpurified ab129202 showing positive staining in normal stomach tissue.

Immunohistochemistry (Formalin/PFA-fixed paraffin-embedded sections) - Anti-Integrin alpha E antibody [EPR4166(2)] (ab129202)



Unpurified ab129202 showing negative staining in normal uterus tissue.

Immunohistochemistry (Formalin/PFA-fixed paraffin-embedded sections) - Anti-Integrin alpha E antibody [EPR4166(2)] (ab129202)



Equilibrium disassociation constant (K_D)

Learn more about K_D

[Click here to learn more about \$K_D\$](#)

Other - Anti-Integrin alpha E antibody [EPR4166(2)] (ab129202)

Please note: All products are "FOR RESEARCH USE ONLY AND ARE NOT INTENDED FOR DIAGNOSTIC OR THERAPEUTIC USE"

Our Abpromise to you: Quality guaranteed and expert technical support

- Replacement or refund for products not performing as stated on the datasheet
- Valid for 12 months from date of delivery
- Response to your inquiry within 24 hours
- We provide support in Chinese, English, French, German, Japanese and Spanish
- Extensive multi-media technical resources to help you
- We investigate all quality concerns to ensure our products perform to the highest standards

If the product does not perform as described on this datasheet, we will offer a refund or replacement. For full details of the Abpromise, please visit <https://www.abcam.com/abpromise> or contact our technical team.

Terms and conditions

- Guarantee only valid for products bought direct from Abcam or one of our authorized distributors